

CHESHAM BOIS SPEED DATA

Summary

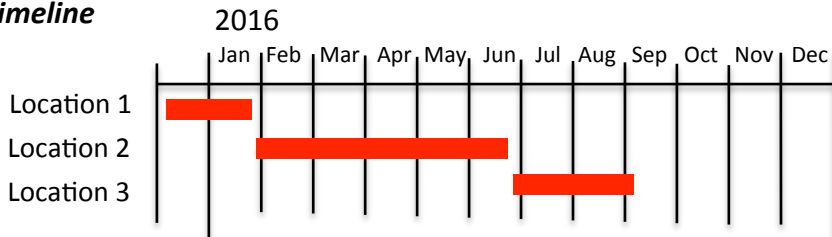
Chesham Bois Parish Council is committed to maintaining road safety for all users and invested in a speed monitoring sign to make drivers aware of the speed they are travelling at.

The sign has been in use since January 2016 in North Road and Bois Lane and a summary of the data is presented below for your information.

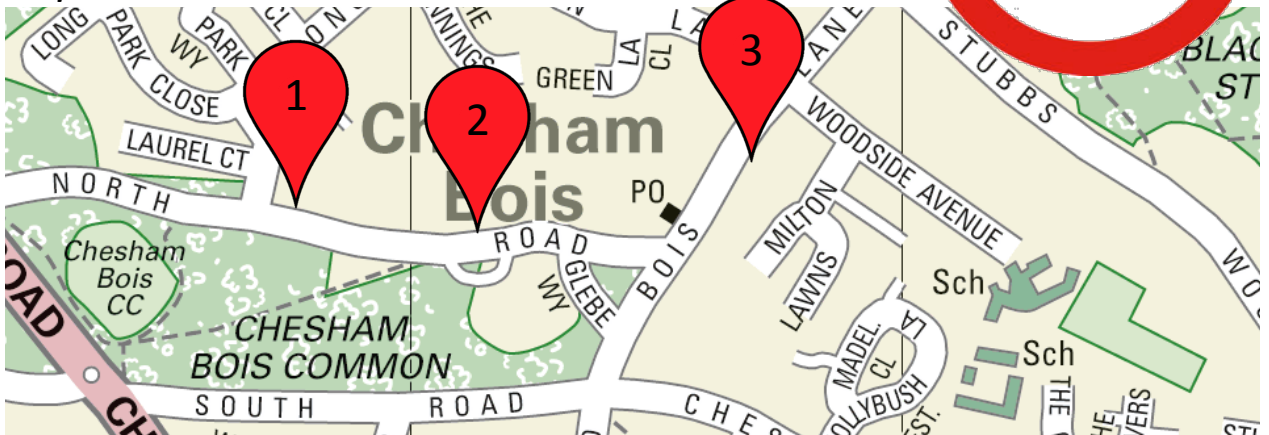
Whilst the majority of drivers observe the speed 30 mph speed limit a minority do not.

This data has been passed to the police and they will be conducting an enforcement programme during the coming months




Timeline



Map

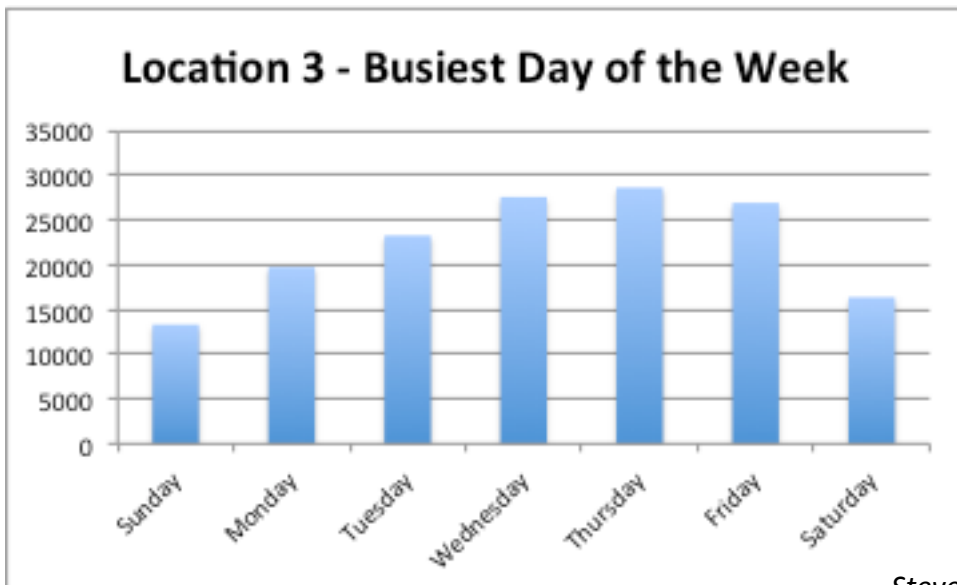
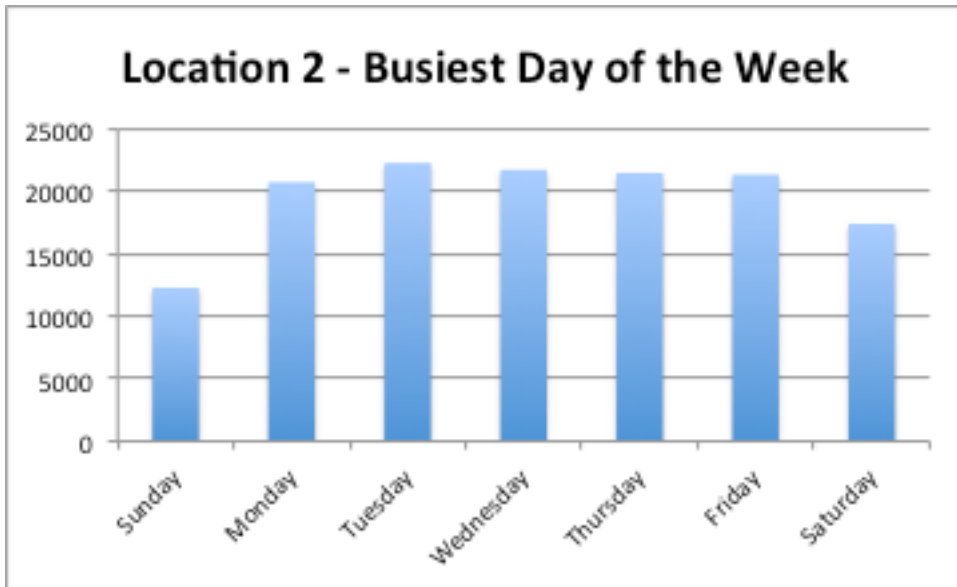
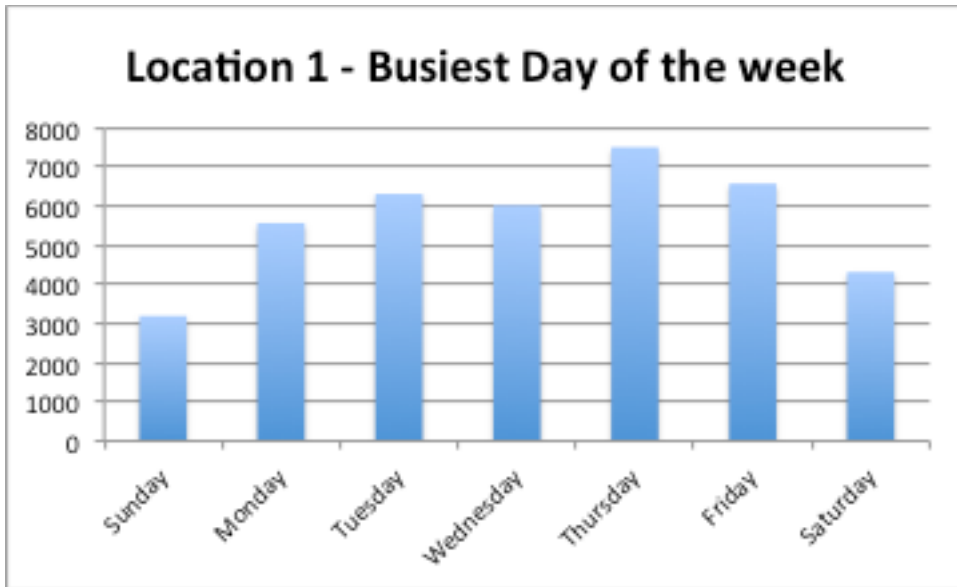


Statistics

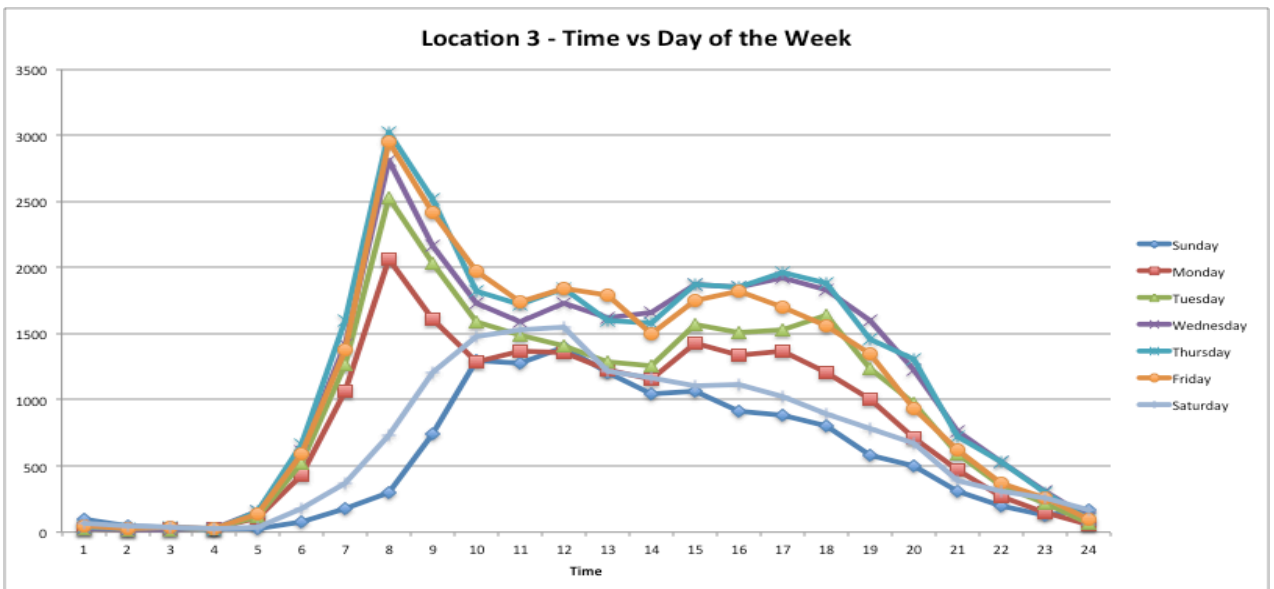
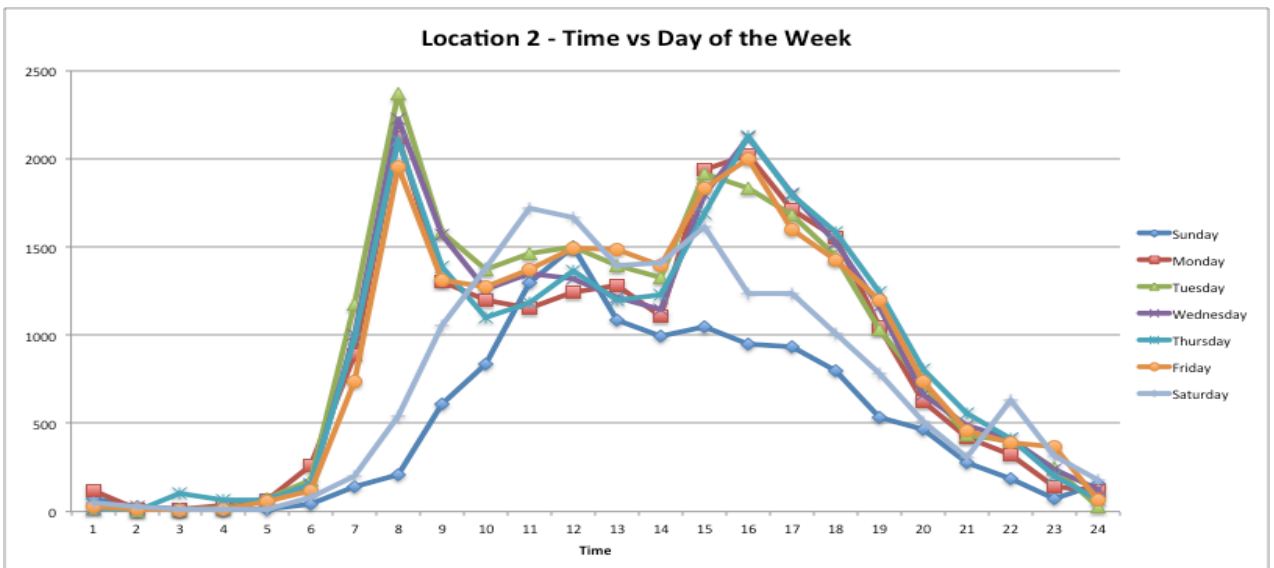
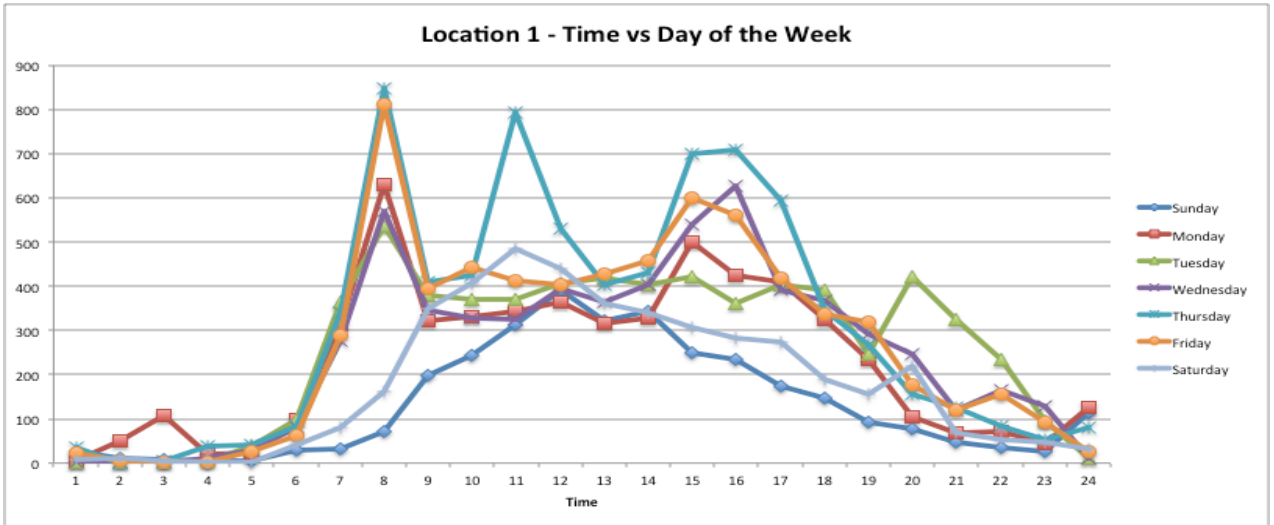
Statistic	North Road East 	North Road West 	Bois Lane South 
Total Movements during period	39,455	136,988	155,771
Days present at location	44	131	65
Percentage of movements over 29mph	31%	23%	13%
Percentage of movements over 34mph	7%	5%	2%
Max Speed	68 mph	68 mph	68 mph
Busiest Time of Day	7-9 am	7-9 am	8-10 am
Average number of movements/day	896	1045	2396
Time most likely to speed*	1-5 pm	8 am & 3-6 pm	7-8 am & 6-7pm

* See appendix 4 for details

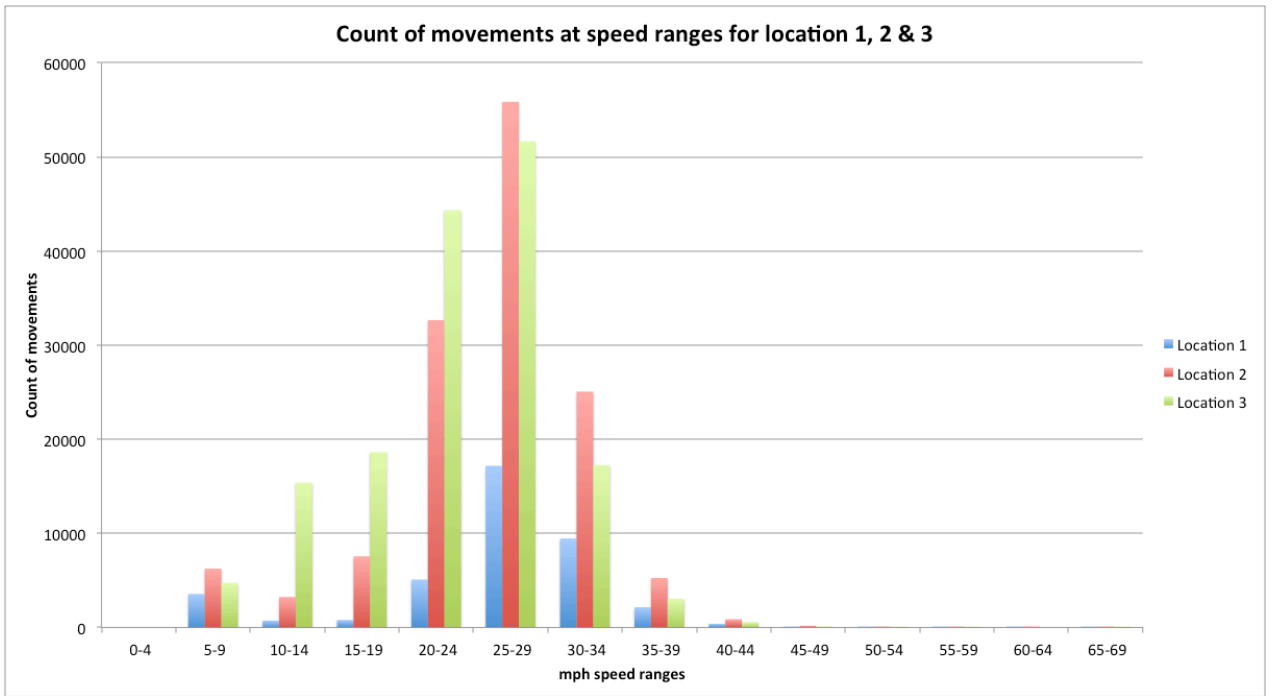
Appendix 1 – Busiest Day of the week



Appendix 2 – Time vs. day of the week



Appendix 3 – Count of movements at speed ranges for each location



Appendix 4 – Time most likely to speed

